



**WELCOMES**





**K & K GROUP OF COMPANIES**  
**GREY & SG IRON MACHINED COMPONENT**  
**MANUFACTURER**

**GROUP PROFILE**



# Location



**K&K Group** is located at Shirol MIDC Kolhapur district in western region of Maharashtra state in India



## Nearest Airports

International	Goa	236 Km
International	Mumbai	374 Km
International	Pune	231 Km
Domestic	Belgaum	126 Km



## Nearest Sea port

Nhava Sheva Port	Mumbai	349 Km
------------------	--------	--------



# About Us



K & K Group started in Year 1996

A multi crore group is engaged in manufacturing activities of Grey Iron & SG Iron casting components

The driving force behind the group is both the Directors



**Samir U Kale**  
B E Mech



**Vivek M Kavle**  
B E Mech



Working on the principle

**Don't Just Dream, Be a Visionary**



# Group Companies - Overview



ISO/TS 16949:2009  
ISO 9001:2008 Certified

**K&K Craftsman Pvt. Ltd.**  
State Of Art Machine Shop with  
Ultra Modern Facilities

**K&K Foundry Pvt. Ltd.**  
Fully Mechanized Foundry  
Capacity -1075 MT/Month

**Shilp Enterprises**  
Fully Mechanized Foundry  
Capacity 825 MT/Month

**Win Win industries**  
Machine Shop



1996



2000



2008



2010



# Vision & Mission



## Vision

To become the preferred choice of tractor, automotive and Industrial Customer to source castings and machined components in small to medium Tonnage.

## Mission

K & K Group is an aggressive and fast growing group of foundry and machining companies primarily catering to the tractor and automotive sector.

Through investment in our people, systems and machinery, we strive to make superior business decisions.

We endeavor to grow by building sustainable relationships and forming alliances with like minded organizations.

We will not compromise the safety of people nor jeopardies the environment. Our goal is a flawless record. In order to achieve it, we demand transparency and honesty throughout our organization.



# Our Strengths

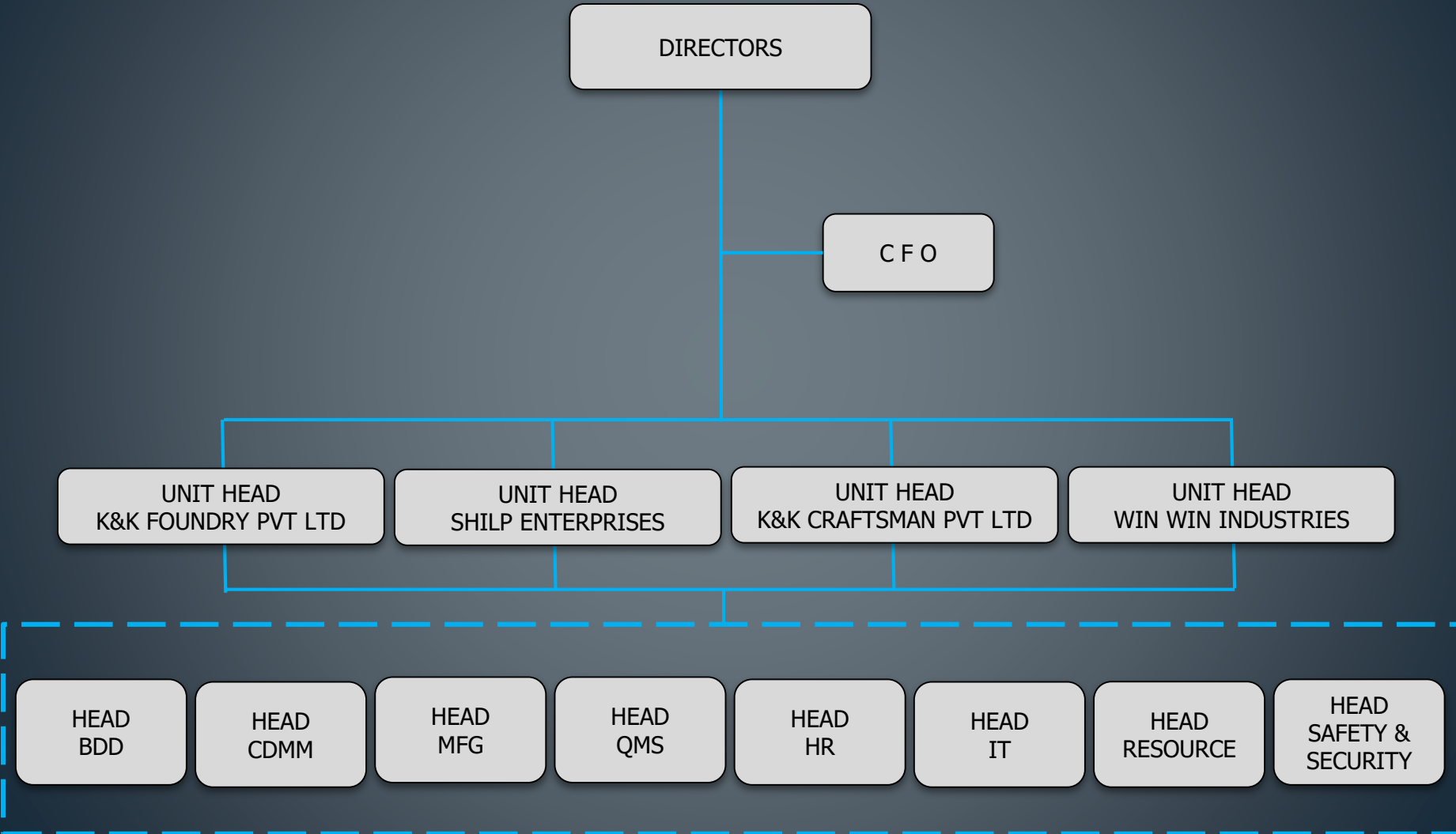


- Well qualified & professional executives with effective organization structure
- Wider range of machined castings in Grey Iron between 0.5 to 100 kg & SG Iron between 0.5 to 75 kg of a single piece
- Implement strong PEOPLE practices. Average age group of employees is 40 years
- Lower attrition for direct and indirect employees resulting knowledge & skill retention
- Timely Blue collar agreement settlement and having a healthy organization
- Institutionalized process for Kaizen, Process improvements and Problem solving techniques
- Ability to develop parts 'first time right' and in a committed time frame
- Capabilities to adapt to emerging trends and absorb new technologies





# Organization Chart





# Group Infrastructure



## FOUNDRY FEATURES

- 1900 MT Good Casting Capacity Per Month
- Induction Furnace
  - 1000 Kg (1000 Kw) 1 No
  - 750 Kg (750 Kw) 1 No
  - 500 Kg (1250 Kw) 1 Set Tri Track
- Fully Mechanized Automatic Sand Plant & Moulding Line
- Moulding Machines
  - ARPA 450 3 Sets
  - ARPA 300 1 Set
- Moulding Box Size in mm
  - 600 x 700 x 200 (Pin Center 780 mm)
  - 560 x 600 x 200/150 (Pin Center 675 mm)
  - 500 x 560 x 150 (Pin Center 635 mm)





# Group Infrastructure



## FOUNDRY FEATURES

- Automation for Sand Additives
- Automated Conveyor System For Handling Castings
- In House Core Making Facility
  - Shell Core
  - No Bake Core
  - Cold Box Core
- In House Shot -Blasting, Tumb Blast & Fetting Facilities
- Fully Equipped Laboratories
- Spectrometer (Brucker Q4 Tasman)
- Spectrometer (Shimadzu PDA 5500S)
- Computerized Universal Testing Machine





# Group Infrastructure



## MACHINE SHOP FEATURES

- 17 CNC Turning Centers
- 10 Vertical Turning Lathes
- 04 Horizontal Machining Centers
- 12 Vertical Machining Centers with APC
- 01 Vertical Machining Center with 4<sup>th</sup> Axis
- 01 Vertical Machining Center
- 01 Drill Tap Center
- 18 Special Purpose Machines
- 01 Cylindrical Grinding Machine
- 18 Medium Duty Lathe Machines
- 01 Milling Machine
- 08 Radial Drill Machines
- 04 Pillar Drill Machines
- 05 Tap Fast Machines
- 02 Broaching Machines
- 04 Balancing Machines



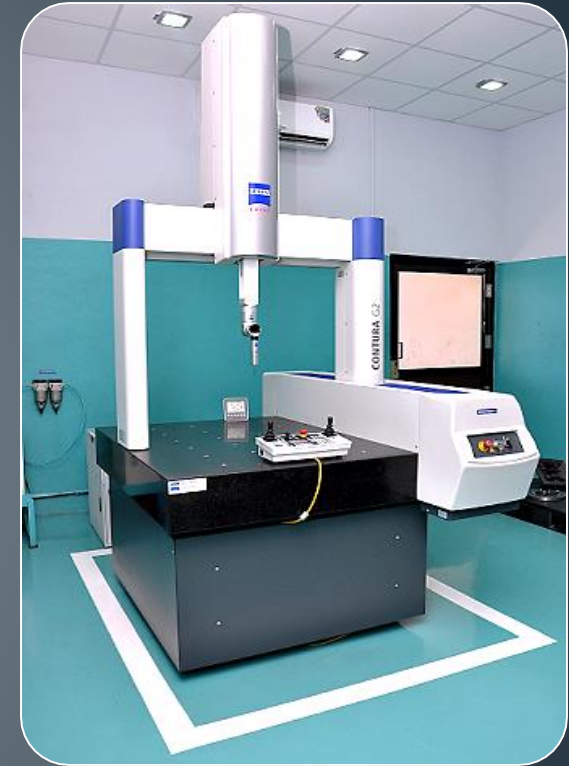


# Group Infrastructure



## MACHINE SHOP FEATURES

- 01 Press Machine
- 01 Marking Machine
- 04 Leakage Test Machines
- 02 Component Cleaning Machines
- 01 5 Tank Electro Violet Cleaning Facility
- 01 Millipore Testing Equipment
- 04 Packing Machines
- 01 Optical Profile Projector
- 01 Digital Flatness Measuring Equipment
- 02 Surface Roughness Testers - Mitutoyo
- 02 2D Height Masters - Mitutoyo
- 01 **3D CMM (Contura) 700 x 1000 x 600 - Carl Zeiss**





# Domestic Customers



**Mahindra Gujarat Tractors Ltd,**  
Vadodara

**P M Diesels Pvt Ltd**  
Rajkot

**Deepak Diesels Pvt Ltd**  
Rajkot

**Mahindra & Mahindra Ltd**  
Igatpuri

**Mahindra & Mahindra Ltd**  
Mumbai

**Mahindra Vehicle Manufacturers Ltd,**  
Pune

**Tata Motors,**  
Pune

**Greaves Cotton Ltd**  
Pune

**Husco India Ltd,**  
Pune

**UGC Logistics Pvt Ltd**  
Pune

**Kirloskar Oil Engines Ltd**  
Khadaki Pune

**Kirloskar Oil Engines Ltd**  
Kagal

**UGC Logistics Pvt Ltd**  
Kagal

**Sanika Technologies**  
Jaysingpur

**Rocket Engineering Corporation Pvt Ltd**  
Kolhapur

**Swaraj Engines Ltd**  
Chandigarh

**Mahindra & Mahindra Ltd**  
Rudrapur

**Windals Precision Pvt Ltd**  
Rudrapur

**Escorts Limited,**  
Faridabad

**CLAAS India**  
Faridabad

**Stone India Limited**  
Kolkata

**Mahindra & Mahindra Ltd**  
Nagpur

**Windals Precision Pvt Ltd**  
Nagpur

**Mahindra & Mahindra Ltd**  
Zaheerabad

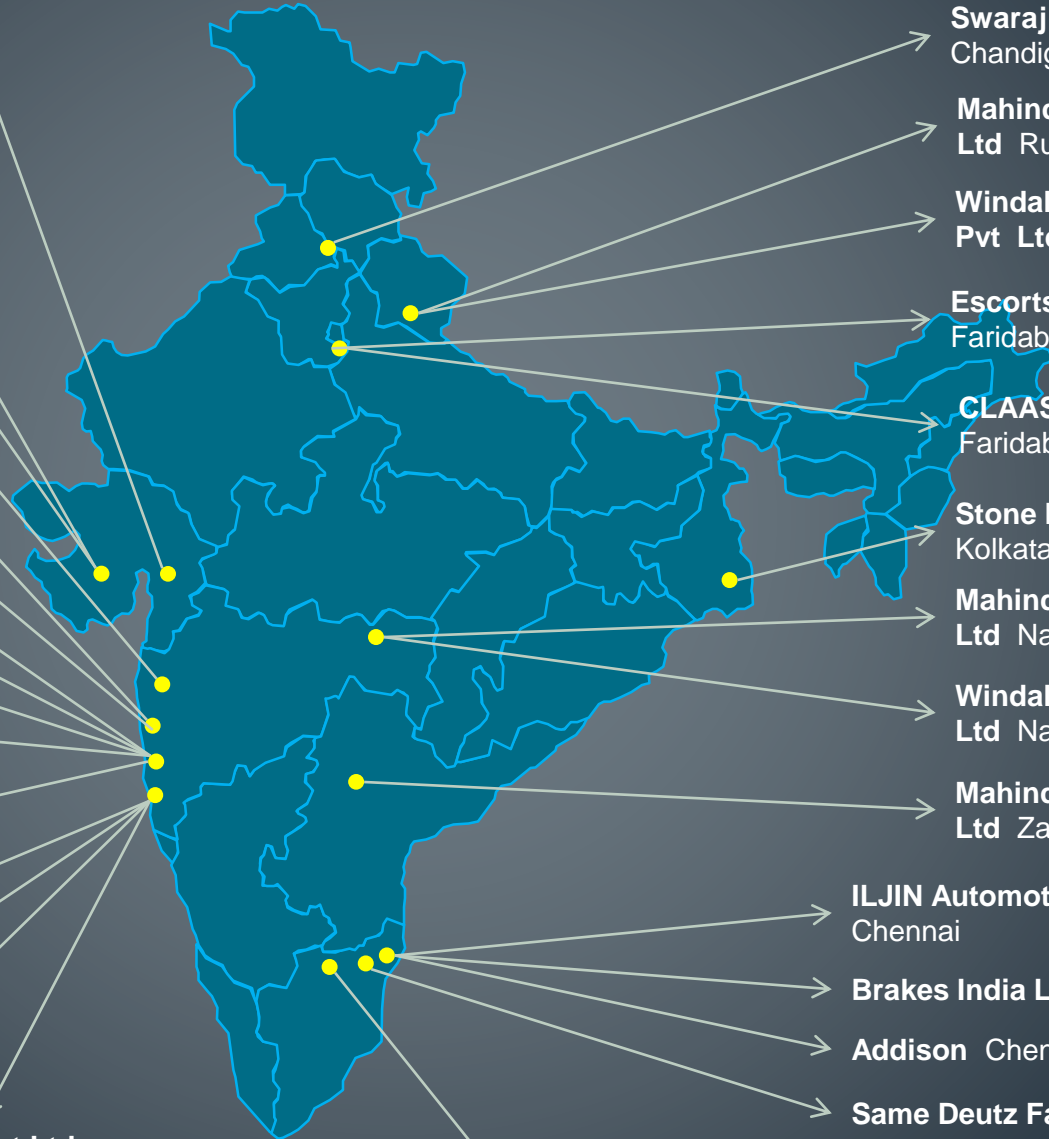
**ILJIN Automotive India Limited**  
Chennai

**Brakes India Ltd**  
Chennai

**Addison**  
Chennai

**Same Deutz Fahr**  
Ranipet

**Caterpillar India Pvt Ltd**  
Hosur





# Overseas Customers



Husco International Ltd  
UK

Claas Industrietchnik GmbH  
Germany

Claas Hungaria KFT  
Hungary

K&K Group Of Companies



# Products



## Tractor Components



FLYWHEEL



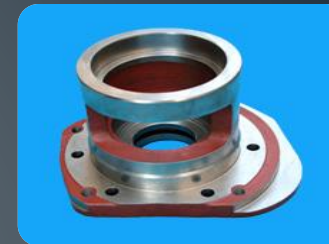
FRONT AXLE SUPPORT



HYDRAULIC HOUSING



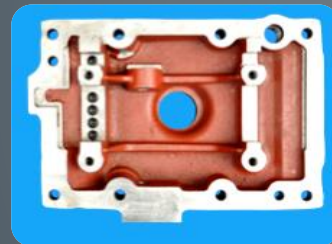
CCF COVER



BULL CAGE



DIFF CASE ASSLY



TRANS CASE COVER



TIMING COVER



BRG HSG SPLIT DRIVE



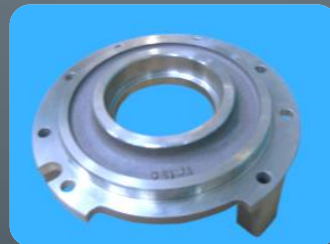
THERMOSTAT HOUSING



INTAKE MANIFOLD



PTO HOUSING



CAGE DIFF LH



CAGE DIFF RH



BRAKE BOX

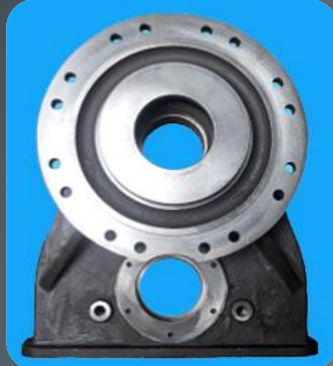




# Products



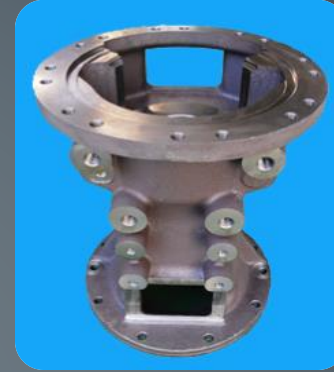
## Tractor Components - Continues



REDUCTION HOUSING



FRONT AXLE SUPPORT



REAR AXLE HOUSING



OIL SUMP



HUB FRONT WHEEL



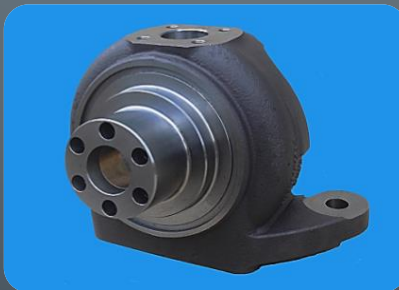
HUB FRONT WHEEL



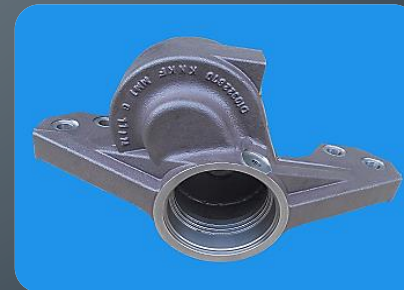
FLYWHEEL HOUSING



SWIVEL HOUSING LH (SGI)



SWIVEL HOUSING RH (SGI)



HOUSING UP BOX (SGI)



# Products



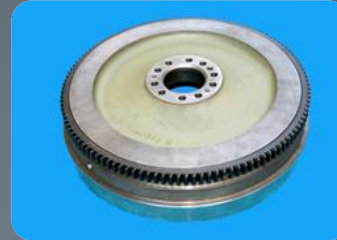
## Engine Components



ROCKER COVER



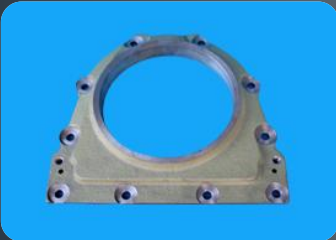
INLET MANIFOLD



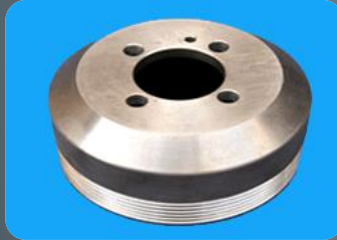
FLYWHEEL ASSLY



BEARING CAP



OIL SEAL HOUSING



WATER PUMP PULLEY



CRANK PULLEY



CRANK PULLEY



CRANK PULLEY



WATER PUMP PULLEY



FLYWHEEL HOUSING



FLYWHEEL



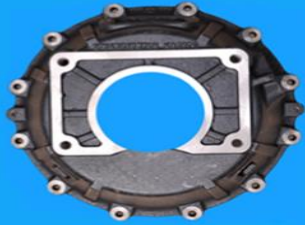
FLYWHEEL HOUSING



# Products



## Automobile Components



CLUTCH HOUSING



CLUTCH HOUSING



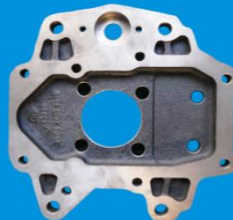
FLYWHEEL ASSLY



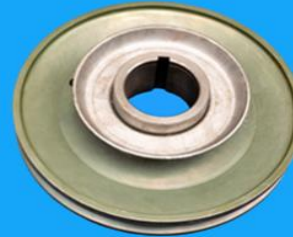
INTERMEDIATE PIPE



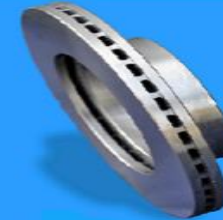
TOP COVER



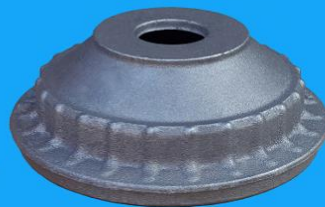
ADAPTOR PLATE



CRANK PULLEY



BRAKE DISC



BRAKE DRUM



HUB (SGI)



# Products



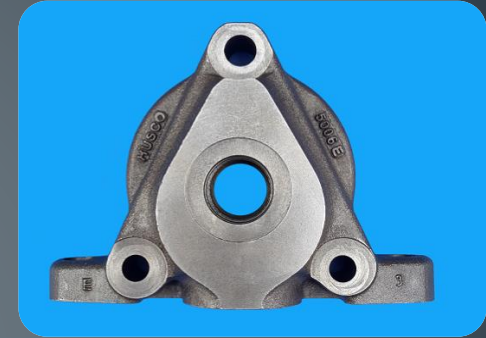
## Hydraulic Components



OUTLET HOUSING



HOUSING SPACER



HOUSING SPACER

## Compressor Components



CR BODY



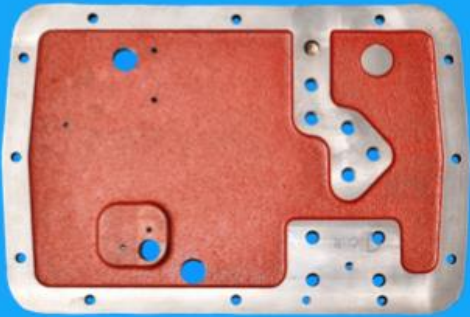
HEAD CYLINDER



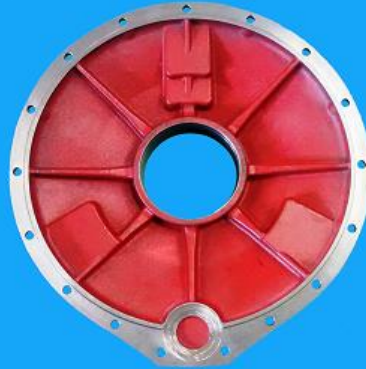
# Products - Exports



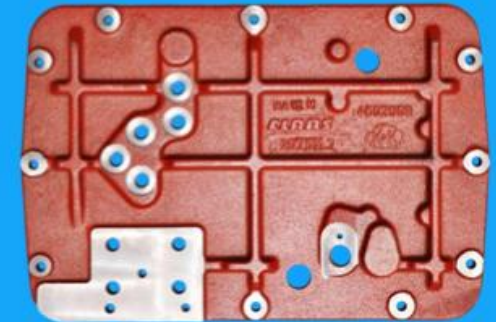
## Harvester Components



GEAR COVER



REDUCTION COVER



GEAR COVER



REDUCTION HOUSING



REDUCTION HOUSING



# Achievements



Model Foundry project – Kaizen Book  
Unveiling at M&M June 2015



Udyogtara Award January 2015



Vasundhara Sanvedana Puraskar KOEL 2014



Kaizen Competition 1st Prize Mahindra Powerol 2013



# Achievements



State Govt Jilha Udyog Puraskar 2013



Gold Winner Trophy in QCFI January 2011



Best supplier Award KOEL 2010



Udyog Bhushan 2010



# Achievements



Panchratna Award M&M 2008



Best Supplier Award KOEL 2009



Excellence Trophy M&M 2010





# Achievements



## SQ Certification

Hyundai Motors India Limited

The SQ - Mark recognizes the technical skills and high-quality level of the products.

SQ – Mark is a certificate issued by the automotive quality assurance team of Hyundai Motors India Ltd (HMIL).

It is awarded only to suppliers able to adhere to strict parameters on quality, process, environment, health, safety and on-time delivery.

K&K Foundry Pvt Ltd

## SQ - CERTIFICATE

SPECIAL PROCESS : FERROUS CASTING  
CERTIFICATE NO : HMI/SQ/256-13  
VENDOR NAME : K & K FOUNDRY PVT LTD  
LOCATION : KOLHAPUR

We hereby issue the SQ Mark Certificate  
for outstanding performance in the  
Quality Management System Evaluation

SUPERVISION : M/s ILJIN AUTOMOTIVE PVT LTD  
SUPPORT : M/s HYUNDAI MOTOR INDIA



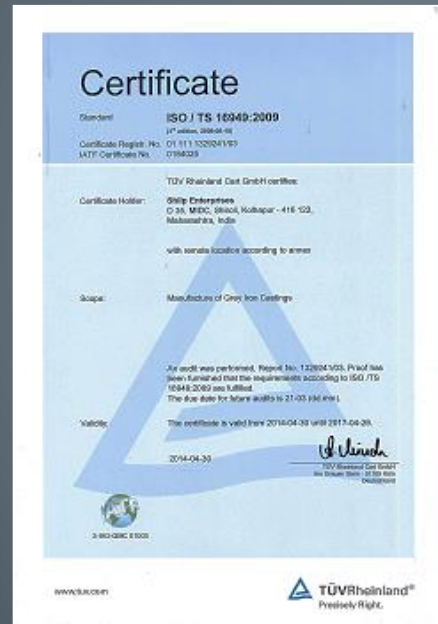
# Certification



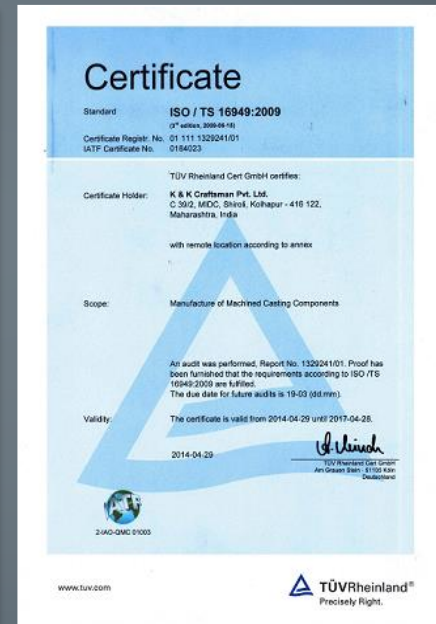
## ISO/TS 16949:2009 ISO 9001:2008 Certified



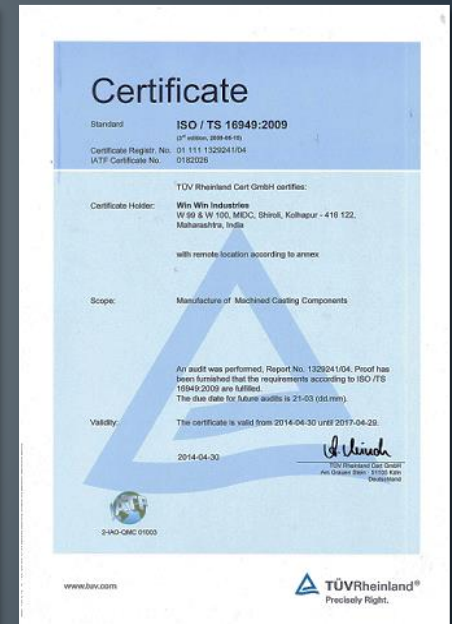
K&K Foundry Pvt Ltd



Shilp Enterprises



K&K Craftsman Pvt Ltd



Win Win Industries



# Corporate Social Responsibility



The happiness becomes more tastier when shared



- Appointment of Physically Challenged person On World handicap day
- Wheel Chairs distribution
- Donations to NGOs like Chetana Apangmati Vikas Sanstha, Ideal Star (Blind School)
- Blood Donation Camps
- Scholarships to children





# Rewards & Recognition



- Safety Suggestion Award
- Best Employee Award
- Kaizen competition
- Best 5S Zone Award
- Long Service Reward





# Sustainability



- Celebration of Director birthday as a **Green day** every year by distribution of plants

- Tree Plantations

- Rain Water Harvesting Project at K&K Group

- Seminar on Rain Water Harvesting by Rain Man of India Mr Shekhar Raghavan

- 'Vasundhara' Sustainability Award

- Promoting Cycle Rides





# Safety



- Trainings On Emergency Services
- Safety Trainings
- Distribution Of Safety Equipments
- Follow Industrial Safety Week
- Road Safety Week
- Safety Drills





# Contact Us



Corporate Office

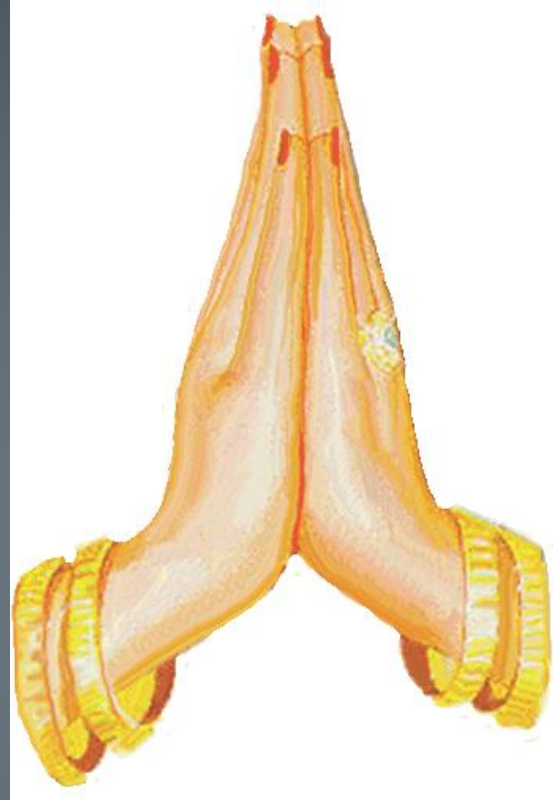
K & K Craftsman Pvt Ltd  
C - 39/2 MIDC Shirol  
Kolhapur – 416122  
Maharashtra India

Email  
Website

[info@knk-group.com](mailto:info@knk-group.com)  
[www.knk-group.com](http://www.knk-group.com)

Contact Person

Shital Sankanna  
Corp GM Business Development  
+91 9923209509



**Thank You**